



# LUNIGIANA 2000

real estate

**Réf. 453**

# Typical stone house



## DESCRIPTION

**Typical stone house** (124 sq m) set in a charming medieval borgo with shops, bar, grocery shop and greengrocer.

The property comprises:

- entrance hall, small taverna, bathroom with shower and cellar-laundry room on ground floor;
- entrance with **terrace**, living room with wood burning stove and kitchen on first floor;
- two double bedrooms and bathroom with shower on second floor.

**Central heating (village gas connection).**

## DÉTAILS TECHNIQUES

Surface habitable

124 m<sup>2</sup>  
Surface extérieure  
150 m<sup>2</sup>  
Niveau sonore  
1 - zona silenziosa  
Étages  
3  
Pièces  
5  
Chambres  
2  
Salles de bain  
2  
Cave  
Oui  
Terrasse  
Oui  
Altitude m s.n.m.  
240  
Classe énergétique  
182.04 Kw/h m<sup>2</sup>  
État  
ristrutturato  
Chauffage  
Autonome a gas metano  
Vue panoramique  
Oui  
Meublé  
Oui

## **Catégorie**

G

MESSAGES.PROPERTY\_IMAGES







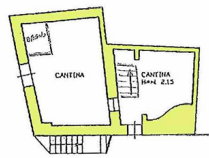




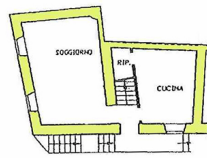








PIANO TERRA



PIANO SECONDO