



LUNIGIANA 2000

real estate

Réf. 382

Portion of Liberty villa



DESCRIPTION

Portion of Liberty villa (250 sq m), which has been built at the early twentieth century and with original features such as frescoed ceilings, with **courtyard and garden** of 275 sq m.

The property consists of:

- large entrance hall, kitchen and living room on ground floor;
- hall, two double bedrooms, one of which with **terrace**, and bathroom on first floor;
- two large cellars on lower ground floor.

The house also includes a well, three store rooms and an external toilet.

Central heating with two pellet burning stoves.

DÉTAILS TECHNIQUES

Surface habitable
200 m²
Surface extérieure
250 m²
Étages
3
Pièces
5
Chambres
2
Salles de bain
1
Jardin
275 m²
Cave
Oui
Place de parking
Oui
Terrasse
Oui
Altitude m s.n.m.
300
Classe énergétique
131.39 Kw/h m²
État
abitable
Chauffage
Stufa a Pellet
Vue panoramique
Oui

Catégorie

E

MESSAGES.PROPERTY_IMAGES













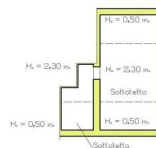




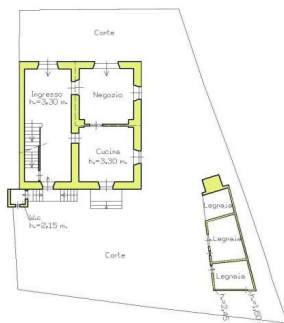




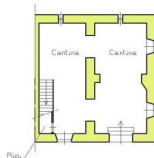
PIANTA SOTTOTETTO



PIANTA PIANO TERRA



PIANTA PIANO SEMINTERRATO
H. = 2,85 m.



PIANTA PIANO PRIMO
H. = 3,30 m.

