



LUNIGIANA 2000

real estate

Réf. 700

Detached villa



DESCRIPTION

Detached villa with over 11.000 sq m of **land**, immersed in the green of the surrounding countryside, close to a lovely stream and just 7 km far from the motorway exit.

The property, which is in very good condition, comprises:

- large portico, entrance hall, living room with dining area, kitchen, pantry, hall, bedroom with ensuite, two single bedrooms and bathroom on ground floor;
- portico, large living room with open plan kitchen, hall, two bedrooms, bathroom and terrace on first floor;
- spacious living area, hall, double bedroom, bathroom and store room on attic floor.

Oven and barbecue outside.

Possibility to build a swimming pool.

DÉTAILS TECHNIQUES

Surface habitable

330 m²

Surface extérieure

380 m²

Étages

2

Pièces

11

Chambres

6

Salles de bain

4

Terrain

11252 m²

Place de parking

Oui

Terrasse

Oui

Portique

Oui

Altitude m s.n.m.

160

État

ristrutturato

Chauffage

Autonomo a gas propano

Vue panoramique

Oui

Meublé

Oui

Catégorie

G

MESSAGES.PROPERTY_IMAGES







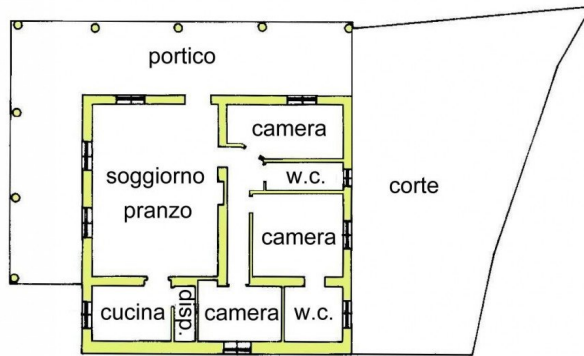




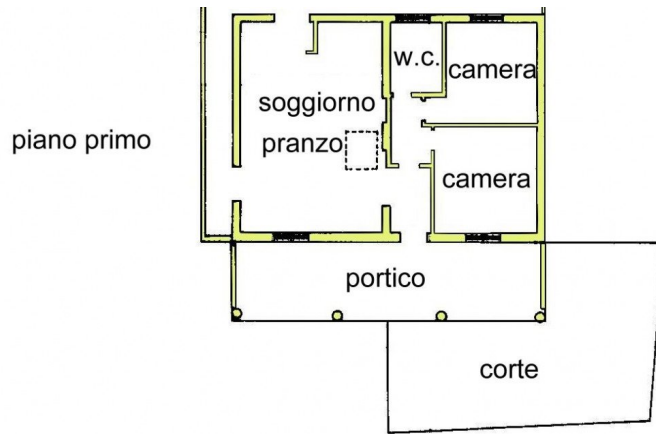




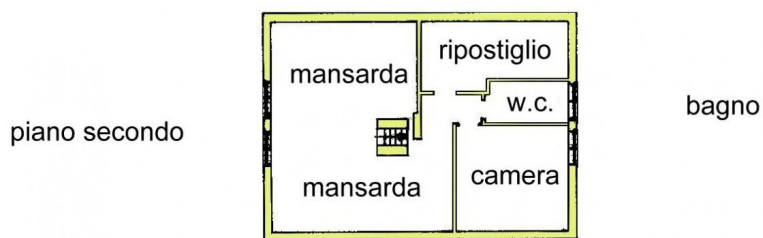




piano terra



piano primo



piano secondo

