



LUNIGIANA 2000

real estate

Réf. 327

Beautiful restored farmhouse



DESCRIPTION

Beautiful **farmhouse** (approx. 300 sqm), recently **renovated** surrounded by **17.912 sqm of land** situated in an hillside and panoramic position, just 5 minutes drive away from Pontremoli

The property consists of **2 separate units**:

1. consisting of large kitchen with pellet stove, living room, bedroom, bathroom with shower on the ground floor; large room with exposed roof, bedroom with walk-in closet and bathroom with bathtub on the first floor accessible by internal staircase from the living room.
2. composed of entrance, kitchen with wood stove, hallway, two bedrooms and bathroom with shower on the ground floor; large attic room with bathroom in the attic and two cellars in the basement.

Central heating (propane gas).

Drinking water system from private source.

DÉTAILS TECHNIQUES

Surface habitable

240 m²

Surface extérieure

300 m²

Niveau sonore

0 - zona molto silenziosa

Étages

3

Pièces

11

Chambres

6

Salles de bain

3

Terrain

17912 m²

Cour

186 m²

Cave

48 m²

Place de parking

3 m²

Portique

Oui

Altitude m s.n.m.

460

État

abitabile

Chauffage

Autonomo a gas propano

Vue panoramique

Oui

Catégorie

G

MESSAGES.PROPERTY_IMAGES





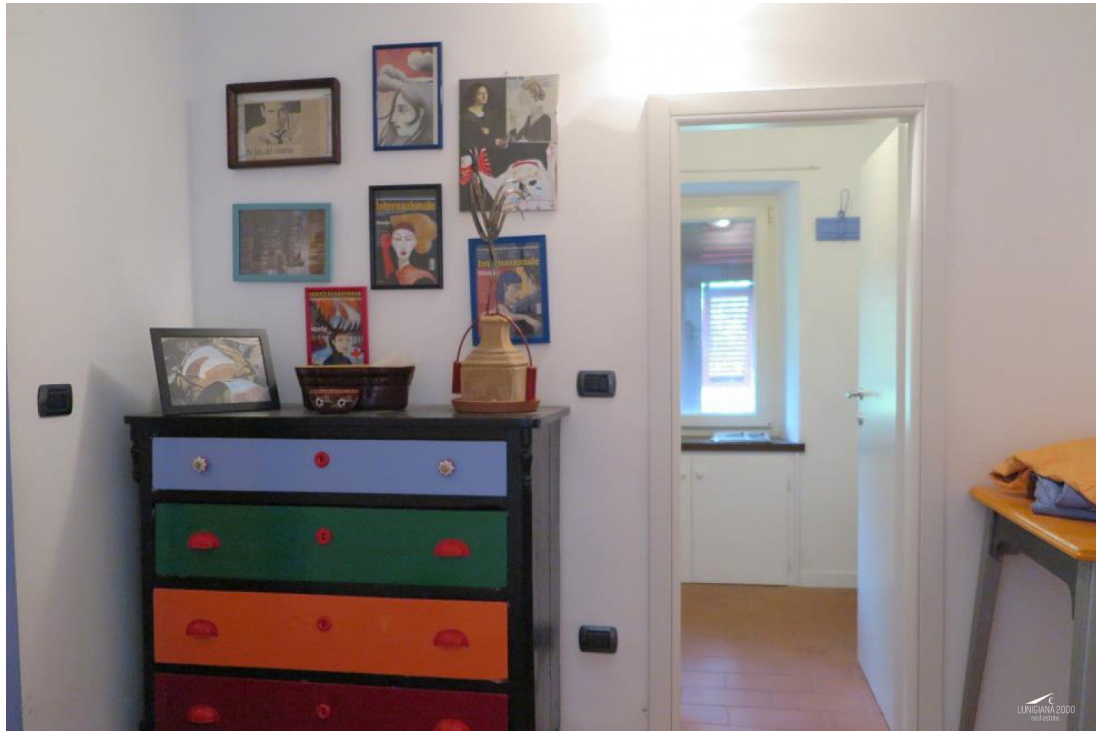














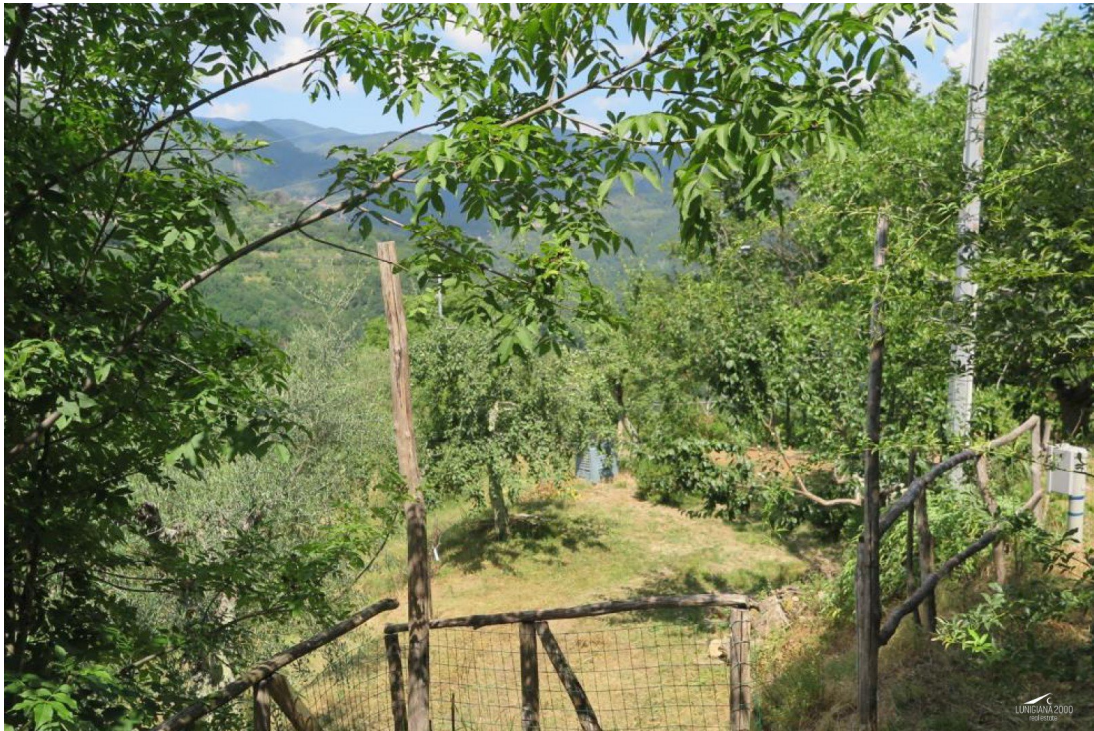


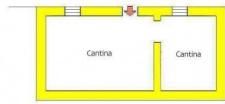




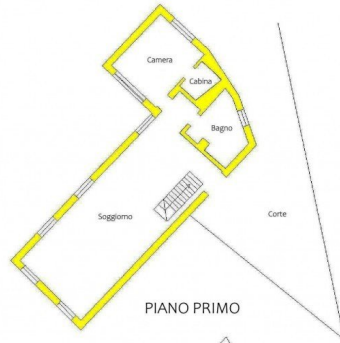








PIANO SEMINTERRATO



PIANO PRIMO

