

# LUNIGIANA 2000

real estate

**Réf. 726**

---

# Detached house with terrace and courtyard



## DESCRIPTION

**Detached house** (230 sq m) with **terrace** and **courtyard** set a few steps from the Doria-Malaspina castle overlooking the town; castle born as a defensive fortress and now seat to some municipal, tourist and environmental education offices, just 40 km far from the Cinque Terre and the Versilia area.

The property comprises:

- living room, bathroom with shower, kitchen with fireplace and pellet burning stove, hall, single bedroom, store room and stairwell on ground floor;
- hall, terrace, living room, dressing room, bathroom with bath and two double bedrooms on first floor;
- three cellars on lower ground floor.

**Central heating (oil). Connection to the village natural gas on site.**

**Fully furnished.**

Excellent solution for holidays or for accommodation business.

## **DÉTAILS TECHNIQUES**

Surface habitable

230 m<sup>2</sup>

Pièces

6

Chambres

3

Salles de bain

2

Altitude m s.n.m.

400

État

abitabile

Chauffage

Autonomo a gasolio

Vue panoramique

Oui

Meublé

Oui

## **Catégorie**

G

MESSAGES.PROPERTY\_IMAGES





















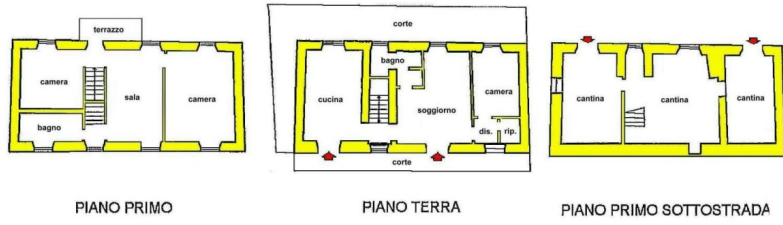












PIANO PRIMO

PIANO TERRA

PIANO PRIMO SOTTOSTRADA